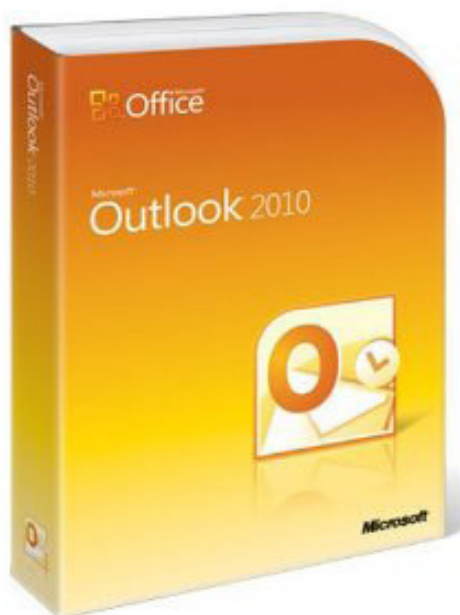


E-Mail configuration with Outlook 2010



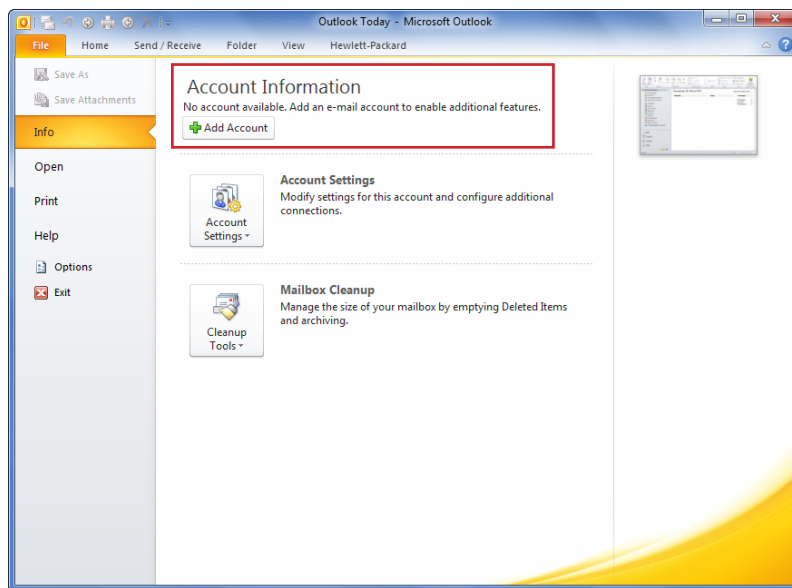
Contents

1. Open Outlook
2. Add a new account
3. User Information
4. Server Information POP / IMAP
5. More settings
6. Test account settings
7. Finalization

switchplus

switchplus Ltd.
P.O. Box, CH-8021 Zürich

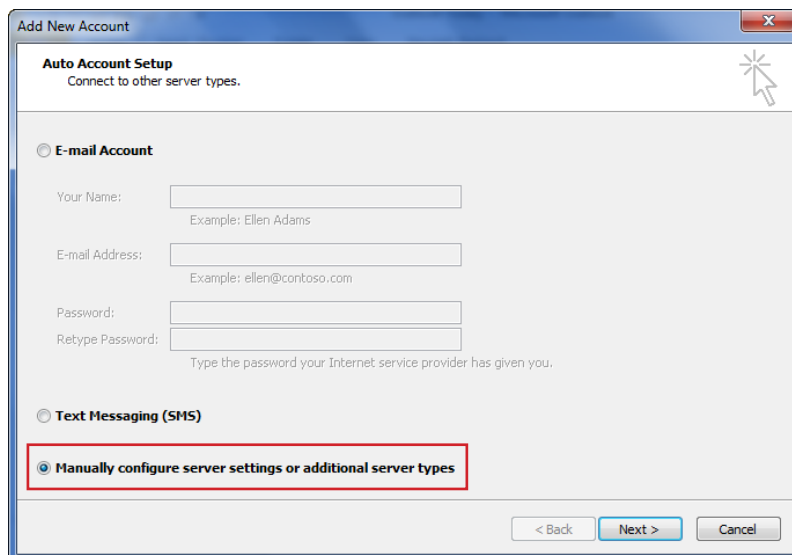
Phone +41 (0)848 69 69 69
E-Mail: helpdesk@switchplus.ch
www.switchplus.ch



1. Open Outlook

Start Microsoft Outlook.

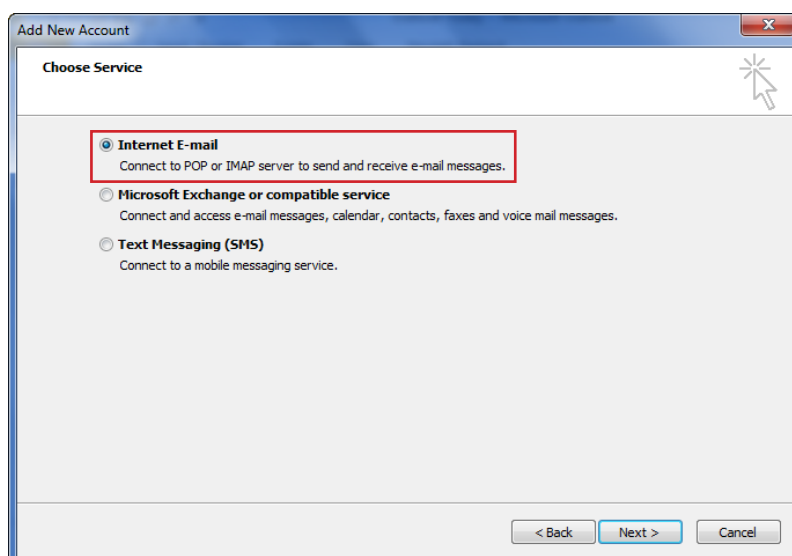
- Open the menu «File», «Info»
- Click on «Add Account»



2. Add a new account

Select «Manually configure server settings or additional server types»

Click on «Next»



Select the option «Internet E-Mail» and click on «Next»

3. User Informationen

Enter the following information:

- Your Name
- Your E-Mail Address

If you would like to install your e-mails on only one computer --> **Use POP3**

If you would like to install your e-mails on several computer --> **Use IMAP**

4. Server Information POP3

Account Type **POP3**

If you want to set up your account with POP3, enter the following information:

Account Type: **POP3**
Incoming mail server: **pop3.your-company.ch**
Outgoing mail server: **smtp.switchplus.ch**

User Name: **Your e-mail address**
Kennwort: **Your password**

Click on «**More settings**»

5. Server Information IMAP

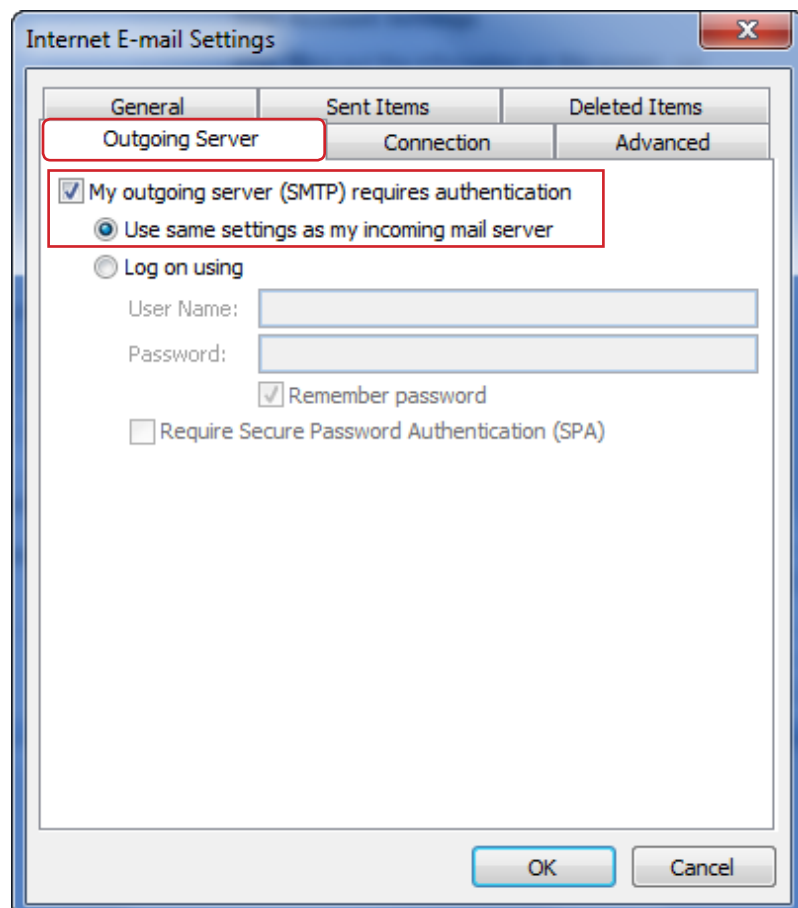
Account Type **IMAP**

If you want to set up your account with IMAP, enter the following information:

Account Type: **IMAP**
Incoming mail server: **imap.your-company.ch**
Outgoing mail server: **smtp.switchplus.ch**

User Name: **Your e-mail address**
Password: **Your password**

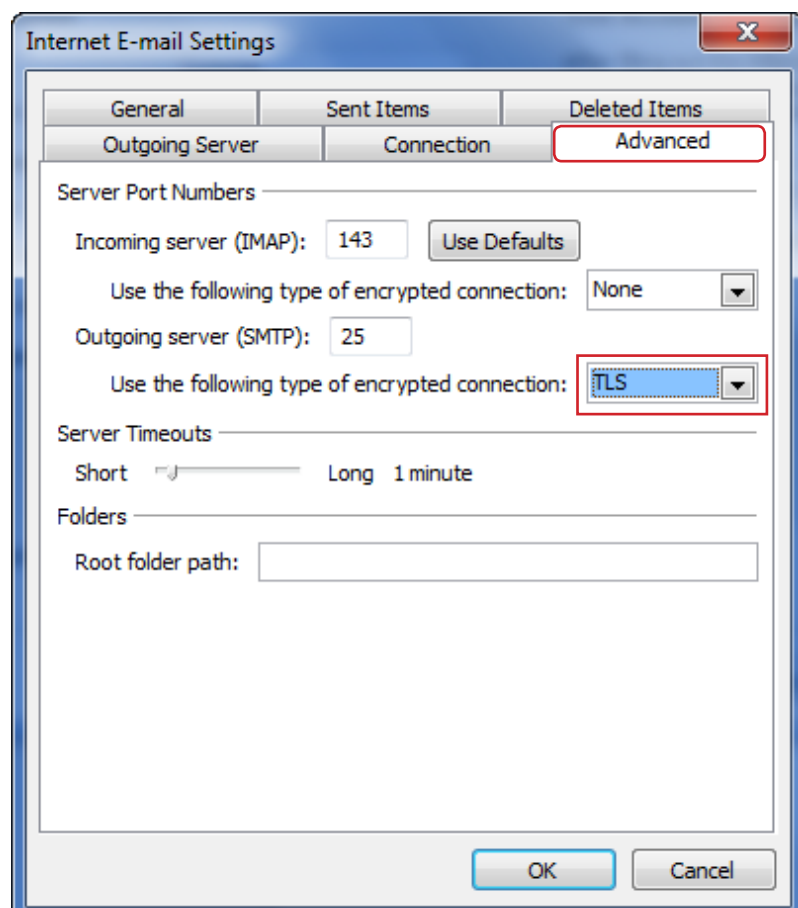
Click on «**More settings**»



6. More settings

Click on the tab «**Outgoing Server**»

Activate «My outgoing server (SMTP) requires authentication»



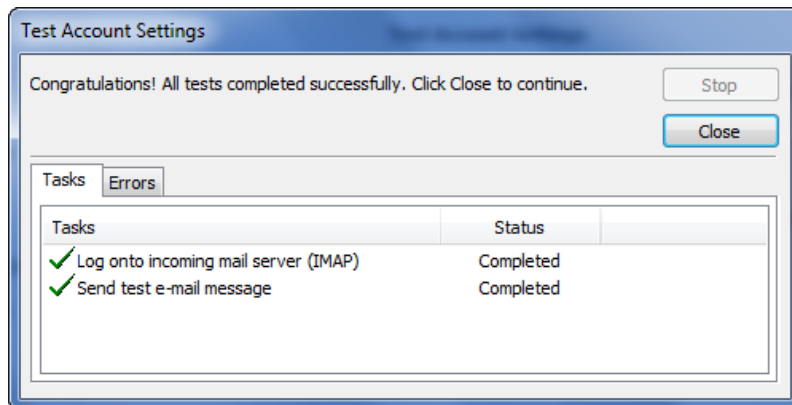
6. More settings

Click on the tab «**Advanced**»

Select by «Use the following type of encrypted connection» «**TLS**».

*Attention! If you have your broadband connection with Swisscom, enter «**587**», instead of the number «**25**».*

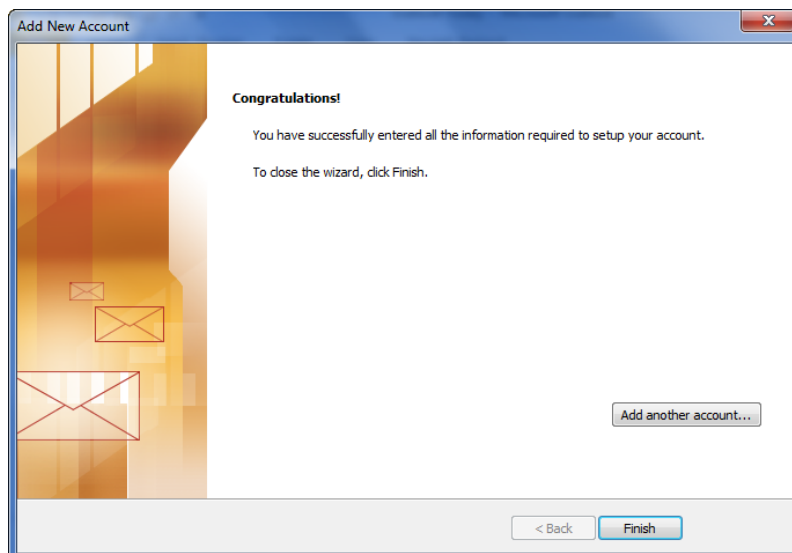
Click on «**OK**»



7. Test account settings

In the following window after each step, a green check mark appears.

Click on «Close»



8. Finalization

Your e-mail account was successfully set up and is now ready for use.

Click on «Finish»